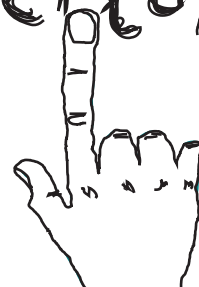




map & DIRECTIONS



Getting to Travellers Inn Hostel:

A) From the Main Train and Bus Station in Krakow

Tram

You'll have to go under the street to get to the tram stop -- take a look at the map to see where. Before boarding the tram (number 13) you'll need to buy a ticket in the kiosk if it's open (say "*bilet normalny*") or buy one from the machine on the tram (with coins only, no notes). Once on the tram you'll want to get off at the stop called "Starowińska". Cross the street to your right and follow Dietla Street. The first turn on the right is Józefa Sarego. The hostel is here at No. 24.

Walk

If you're not weighed down by a gigantic backpack, it will be simpler to walk here (it's a maximum of 15 min., and waiting for the tram would take you a minimum of 10 minutes anyway). It is a nice stroll and will give you a good first look at the city.

Take the pedestrian passage under the street and walk through Planty (the little strip of park) that runs next to Westerplatte Street. This street later turns into Św. Gertrudy. Turn left from Gertrudy when you see the Deutsche Bank onto Józefa Sarego. You will find us at No.24 on Sarego Street.

B) From the Krakow Balice

Train

Take the train from the Airport and get off at the Main Railway Station. Follow the instructions given on the left of this page. The train leaves every 30 min and costs 8 PLN. The whole journey takes 15 minutes. You'll get on the train about 200m from main airport terminal, and there's a free bus every few minutes if you don't want to walk. You can buy your ticket on the train.

Bus

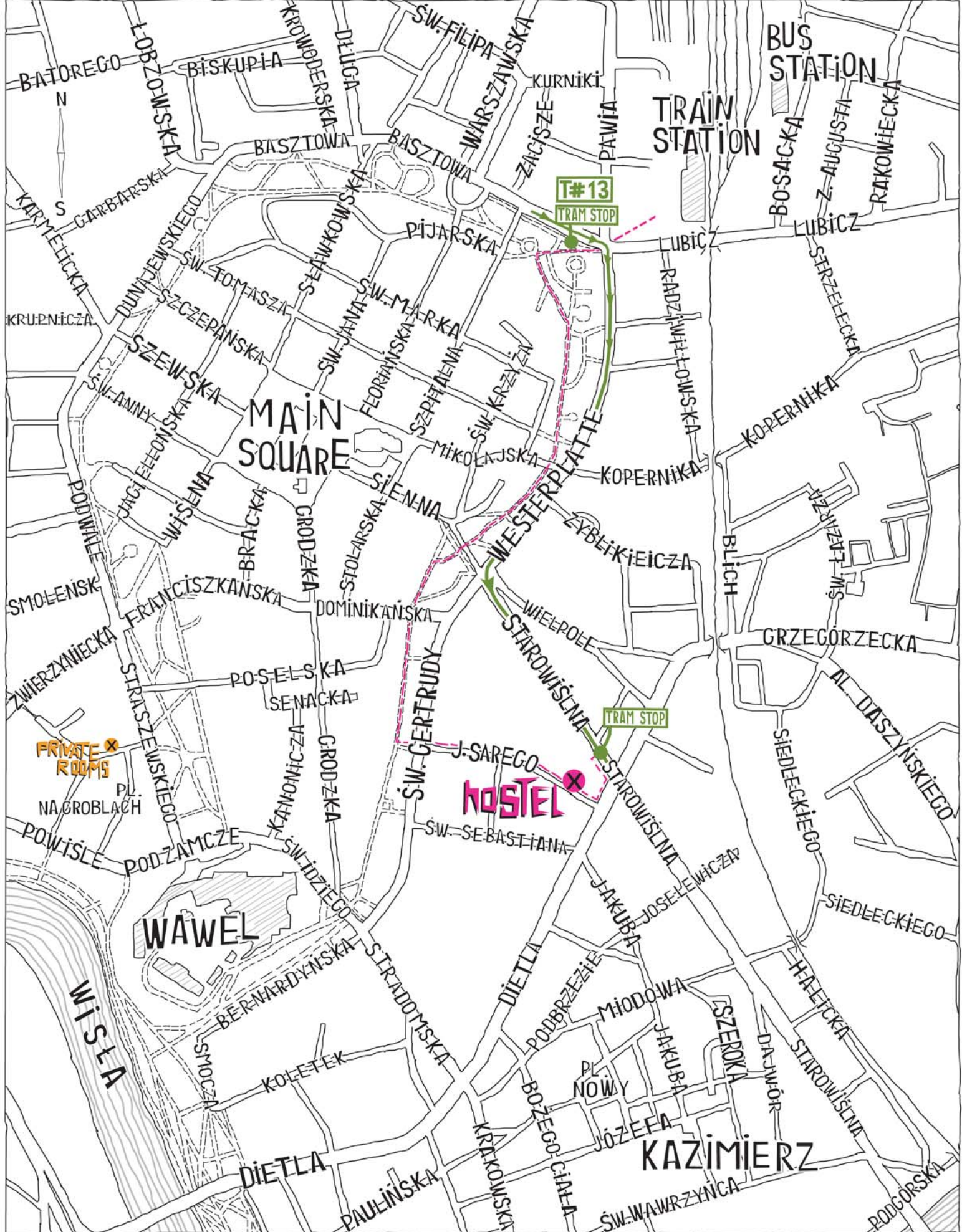
Take bus No. 292 and get off next to the lower platform of the Main Bus Station (Dworzec Główny Wschód). Follow the instructions given above.

The journey takes 45 min., and you'll need to buy a one-way ticket (*bilet normalny*).

Taxi

Taking a taxi to the hostel from the airport costs about 75 PLN.

CONTACT



map & directions

- TRAM/ BUS LINE
- FOOTPATH
- WALK

KRAKÓW



travellers inn hostel krakow j. sarego st 24/2
 phone: + 48 12 429 47 23 mobile: + 48 600 805 048 e-mail: info@travellersinn.pl www.travellersinn.pl